



BANK AUTOMATION SUITE

Add-On for Microsoft Dynamics AX
and Microsoft Dynamics 365
for Finance and Operations

BUSINESS.
SOFTWARE.
EXCELLENCE.

BAS

Using the Bank Automation Suite, the Add-On from Inway Systems, to balance open items automatically. Easy, automatically clearing the open items.

RELIEVE YOUR FINANCIAL ACCOUNTING EMPLOYEES!

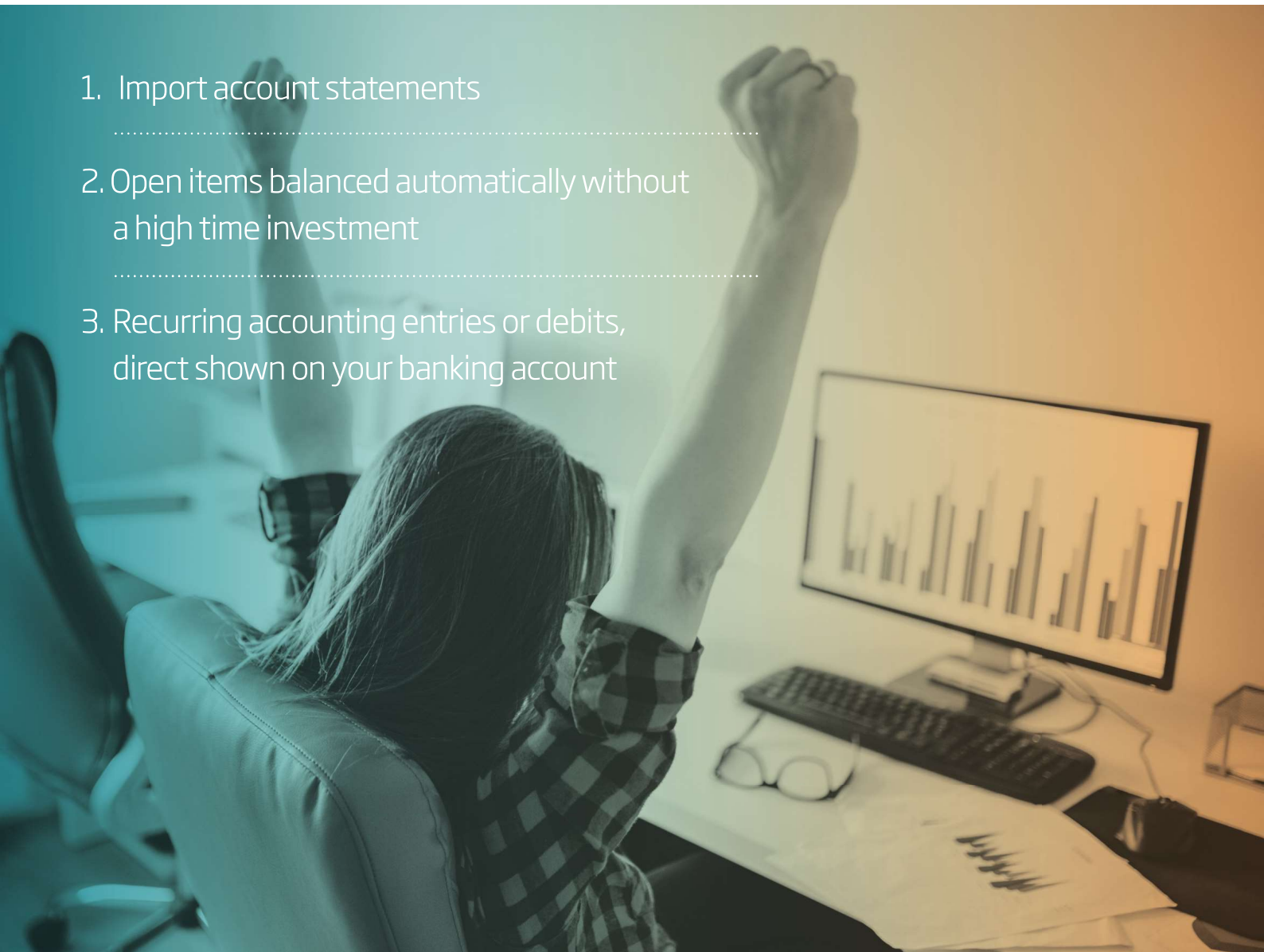
Companies create every day several orders and invoices and expect an equal number of incoming payments and payment advices. All payments are to be found manually in the account statements or payment advices and have to be manually settled.

Payment advices mean additional effort for matching the outgoing invoices because the customer settles several invoices in one payment. In general, the manual reconciliation of bank statements is a monotonous and a manual process for accounting employees.

For automatical bank reconciliation are main key fields for example: intended purpose, transaction code, creditor- and debtor-number required. The Bank Automation Suite find transactions independent and match them with open items. With this self-learning Add-On you save time.

Without an operating expenses the Bank Automation Suite will be implemented and running. This reduces your manual workload instantly.

1. Import account statements
2. Open items balanced automatically without a high time investment
3. Recurring accounting entries or debits, direct shown on your banking account



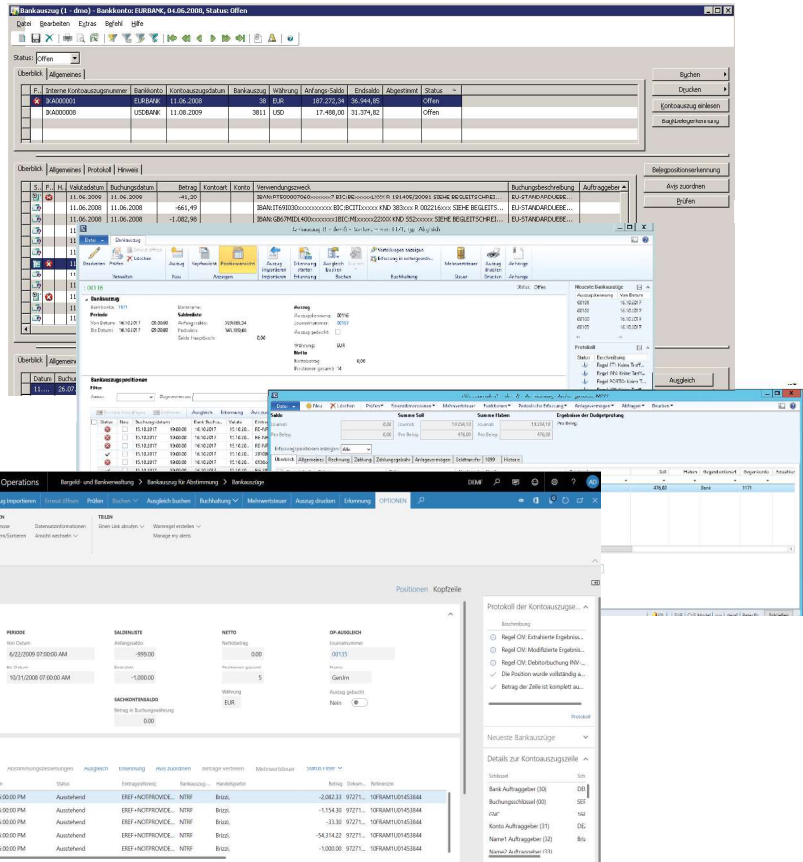
SINCE 2008 SUCCESSFUL ON THE MARKET

The Add-On Bank Automation Suite is a developed system by Inway Systems for Microsoft Dynamics AX / 365.

Since 2008 knows the Bank Automation Suite only successful customer experience.

Development of Add-On for previous Versions of Microsoft Dynamics 365 (AX 2009, AX 2012) have had a minimal influence of standard objects and is now available as an own model.

Bank Automation Suite for Microsoft Dynamics 365 for Finance and Operations is safe for updates because of its simple installing process as an extension.



YOUR ADVANTAGES:



Prozessautomatisation

Yesterday you had enormous accounting effort, today a Bank Automation Suite works for you.



Less monotonous work

You will get more time for more important tasks.



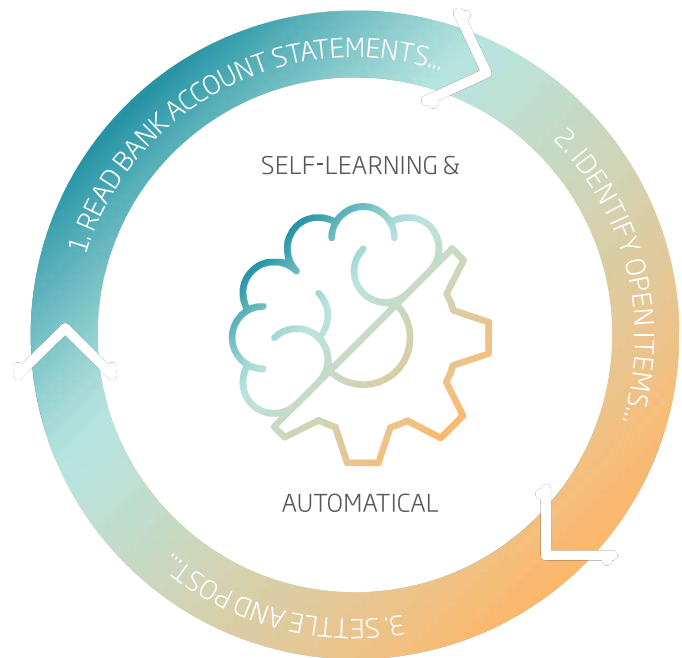
No manuell mistakes

Your manuell settle effort will be automated to over 95 % thanks to recognition rate. Less than 50 of 1000 bank statements will be settled automatically.

DIRECT VALUE

Functions:

- > Common bank account statements (like MT940, CAMT.053, BAI2 etc.) will be imported - also data from any services such as Paypal. Payment advices will automatically be settled.
- > The bank transfer texts will be scanned on the bank account statement and payment advice and all open customer transactions will be matched to these contents with a high recognition rate from 95%.
- > As recurring entries or debit entries (for example rent) are posted directly.



Additional functions:

- > excellent recognition rate.
- > Correction of scan errors (for example: o - instead).
- > automatic correction of discounts or small differences within a configurable percentage.
- > assigning discount within accommodation days.
- > direct posting in main accounts for periodic debit note or transfers.
- > Managing several bank accounts in different legal companies with one bank-file. This means the payments will be assigned automatically in the regarding companies for posting. This reduces administrative activities to a minimum.
- > Concern requirements: Intercompany postings for reconciliation of concern-wide settlements.
- > Accounts payable functionality: Assigning the open transactions from accounts payable payment advice to a common payment amount (1:n). Therefore a longsome reconciliation is no more necessary.

TECHNICAL REQUIREMENTS

Microsoft Dynamics AX 2009 and AX 2012 or
Microsoft Dynamics 365 for Finance and Operations.

JOURNAL IN MICROSOFT DYNAMICS 365 FOR FINANCE AND OPERATIONS

Dynamics 365 Finance and Operations | Bargeld- und Bankverwaltung > Bankauszug für Abstimmung > Bankauszüge

00164 - BAS_EUR | Alle Journale

Erfassungspositionen anzeigen: Alle

Speichern | Buchen | Prüfen | Allgemeine Erfassungen | Periodische Erfassung | Funktionen | Anlagen | Abfragen | Drucken | OPTIONEN

08.03.2018 | 000248 | demf | Debitor | DE-010 | Rechnung CIV-000163 | 2.082,33 | DEMF | Bank | DEMF OPER

08.03.2018 | 000249 | demf | Debitor | DE-011 | Rechnung Nr. CIV-000162 | 54.314,22 | DEMF | Bank | DEMF OPER

08.03.2018 | 000250 | demf | Debitor | DE-014 | Inv. FTI-000001, FTI-000002 | 737,80 | DEMF | Bank | DEMF OPER

08.03.2018 | 000251 | demf | Debitor | DE-015 | CIV-000160 | 189.183,20 | DEMF | Bank | DEMF OPER

08.03.2018 | 000252 | demf | Debitor | DE-016 | CIV-000161 | 218.479,48 | DEMF | Bank | DEMF OPER

08.03.2018 | 000253 | DEMF | Kreditur | DE_TX_001 | MWST-VZ Tax | 12.345,67 | DEMF | Bank | DEMF OPER

08.03.2018 | 000254 | DEMF | Sachkonto | 110180-- | Bareinzahlung Kasse | 18.345,20 | DEMF | Bank | DEMF OPER

08.03.2018 | 000255 | DEMF | Sachkonto | 605150-001-024-014- | Miete Mai 2018 | 10.000,00 | DEMF | Bank | DEMF OPER | AP-DOM | FULL

08.03.2018 | 000256 | DEMF | Sachkonto | 600155-001-024-- | Bankgebühren | 10,00 | DEMF | Bank | DEMF OPER | AP-DOM | FULL

08.03.2018 | 000257 | DEMF | Sachkonto | 112010-- | SEPA Credit Sammler | 1.849,20 | DEMF | Bank | DEMF OPER

08.03.2018 | 000258 | DEMF | Sachkonto | 112000-- | Cash pooling transfer | 10.000,00 | DEMF | Bank | DEMF OPER

08.03.2018 | 000259 | demf | Debitor | DE-100 | REWE M CIV-000164 751.7 REWE S CIV-0... | 783,02 | DEMF | Bank | DEMF OPER

08.03.2018 | 000260 | demf | Debitor | DE-101 | REWE M CIV-000164 751.7 REWE S CIV-0... | 1.503,40 | DEMF | Bank | DEMF OPER

08.03.2018 | 000261 | DEMF | Debitor | DE-012 | DE-012 Mahngebühren | 50,00 | DEMF | Bank | DEMF OPER

Kontenbezeichnung | Bezeichnung des Gegenkontos | Berechneter Mehrwertsteuerbetrag | Tatsächlicher Mehrwertsteuerbetrag

A Datum Corporation | Operating account - E... | UUU | UUU

SOLL | ENTLASTUNG | SALDO | ERGEBNISSE DER BUDGETPRÜFUNG

BELEG | 2.082,33 | 2.082,33 | 0,00 | Budgetprüfung nicht ausgeführt

JOURNAL | 519.683,52 | 519.683,52 | 0,00

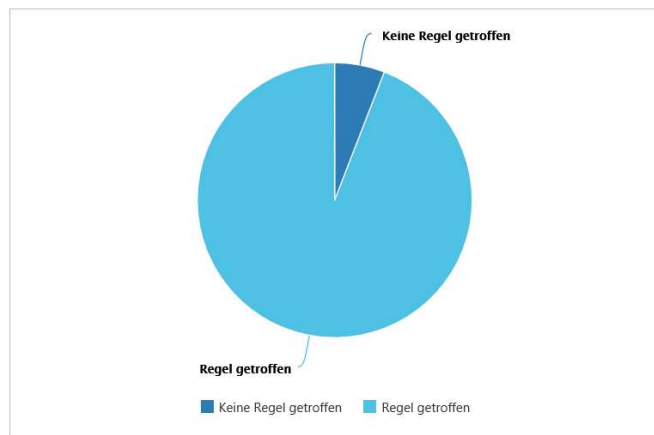
RECOGNITION RATE OVER 95 %

Your success factors are:

- > Überweisungsbetrag,
- > Kunden-/Lieferantnummer,
- > Geschäftsvorfallcode und
- > Betrag.

The Bank Automation Suite find the open transactions by itself. It is a self-learning App which leads to a continuous improvement of the recognition rate.

GESAMT: AUSZUGSPOSITIONEN MIT UND OHNE TREFFER



SUCCESS STORY



a joint venture of BMW Group and ALBA Group.

The Encory GmbH is a Joint Venture of the **BMW Group** and the **ALBA Group** based in Unterschleißheim.

Encory uses Microsoft Dynamics 365 for Finance and Operations. Encory offers BMW spare parts for a very low price. This is caused by a circulatory system.

Background:

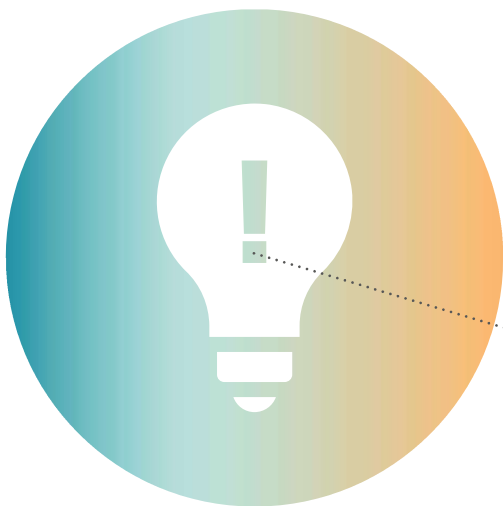
With a new webshop Encory wants to get more involved in B2C business and so sell the components directly to the end customers.

Challenge:

Automatic reconciliation of open transactions from end customers, after the extension to B2C marked significantly increase. More debtors and incoming payments are expected. Particularly important: Automated payments also via PayPal.

Solution:

In the Bank Automation Suite, Encory found exactly what they were looking for. Bank statements and payment advices are automatically cleared against open items. Data from payment services like PayPal, will be processed quickly and reliably read.



Benefit to Encory

- > Automated payments also via PayPal.
- > Within two days, the Bank Automation Suite was fully launched to Encory and integrated into the existing ERP system of Microsoft.

CUSTOMER'S VOTE

Görtz Retail GmbH

„With Inway's Add-On Bank Automation Suite, we have chosen a proven solution to quickly and easily integrate banking in our Microsoft AX financial modules“.

Matthias Probst, IT-Leiter

INWAY SYSTEMS: YOUR LEADING PARTNER FOR MICROSOFT DYNAMICS



Our objective is to align our customers' business processes with growth.

We focus on high efficiency, more profit and digital capability for our customers.

We offer the Implementation of all services, which our customers, need to operate and optimize their ERP and CRM business solutions based on Microsoft Dynamics AX / 365.

The main assignment for Inway is experience, competence, high speed of introduction and safety, reliability and innovation.

Since 2003, our experienced team of consultants has been working on the digital heart thus on the digitization of nationally and internationally oriented companies in trade, manufacturing and service sectors. We rely on products from Microsoft.

These have built-in intelligence, deliver the speed of the cloud, are innovation drivers and stand for best future security.

We strive for long-term partnerships with our customers on an equal footing. Even if the company is our customer, we work for and with people.

Here you will find Inway Systems:

BERLIN	„Federal capital“
CHEMNITZ	„Technology location“
HAMBURG	„The gateway to the world“
KÖLN	„Birthplace of Konrad Adenauer“
ULM (HAUPTSITZ)	„City of the physicist Albert Einstein“

Inway Systems GmbH

phone: +49 731 88 00 73-0

info@inway.de
www.inway.de

